



Bitten House / arnau estudi d'arquitectura

24 SEP 2013
Houses Selected Works arnau estudi d'arquitectura Sant Feliu de Pallerols Spain



201



53



10



3K+



© Marc Torra

Architects: [arnau estudi d'arquitectura](#)
Location: [Sant Feliu de Pallerols, Spain](#)
Architect In Charge: [Arnau Vergés Tejero](#)
Collaborator: [Xevi Bayona Camó](#)
Construction Engineer: [Josep ma Codinach Frigola](#)
Year: **2012**
Photographs: [Marc Torra](#)



MORE OF ARNAU ESTUDI D'ARQUITECTURA



8 Jan 2015
Farm Surroundings / Arnau Estudi d'Arquitectura



10 Oct 2013
Carrera's Farmhouse Barn / Arnau Estudi d'Arquitectura

SELECTED BUILDINGS

24 SEP 2013

Houses Selected Works amau estudi d'arquitectura Sant Feliu de Pallerols Spain



201



53



10

8+1

3K+



© Marc Torra

From the architect. On a river bank, at the bottom of a valley, open to distant cliffs, this simple house shows us closed as a box to keeping small treasures: the first morning sun, the church tower view at the other side of the river, the precipitous cliffs, the maze of trunks of riparian forest... All possessions jealously guarded by the house without knowing that, in fact, is she who belongs to them.



MORE PROJECTS

MOST VISITED OF THE WEEK



14 May 2015
Micro-apartment in Berlin / spamroom + johnpaulcoss



10 May 2015
Antivilla / Brandhuber+ Emde, Schneider



12 May 2015
RP House / CMA Arquitectos



27 Nov 2012
Reading Between the Lines / Gijs Van Vaerenbergh



14 May 2015
Zaha Hadid Unveils Community Oriented

24 SEP 2013

Houses Selected Works amau estudi d'arquitectura Sant Feliu de Pallerols Spain



201

Like

53

Tweet

10

+1

3K+

Pin it

Email



© Marc Torra

In this place, we propose a concrete cube that relates to its environment with minimal gestures. Four bites in four opposite corners of the house resolves relations with the outside. Ground floor corner breaks lead to two porches: the one on the corner south prolongs the living room and the kitchen over the garden and, on the northern corner, it generates space for vehicles and access for the house. On the first floor, the breakings generate two terraces for the bedrooms and two skylights for the ground floor.



© Marc Torra



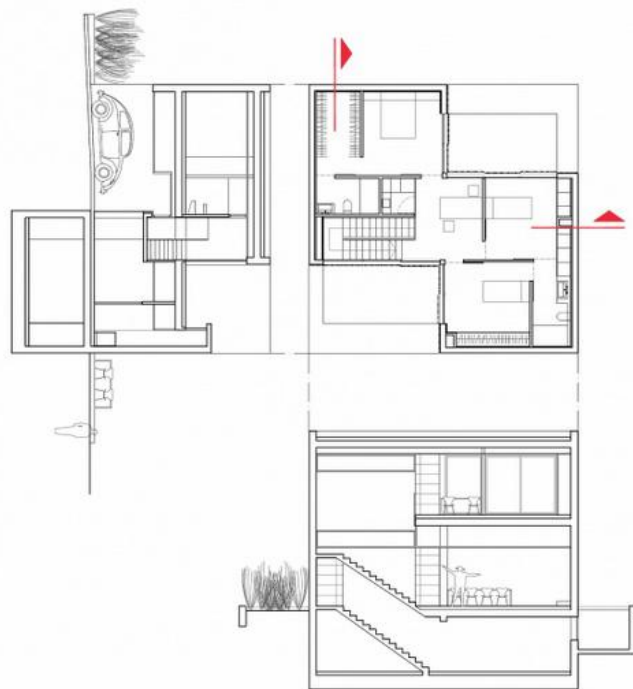
Community-Oriented Housing Project In Monterrey

24 SEP 2013

Houses Selected Works arnau estudi d'arquitectura Sant Feliu de Pallerols Spain

Rough as peach skin, it is only when we bite this fruit of concrete when we discover all the hidden sweetness inside.

- Bookmark
- 201
- Like
- 53
- Tweet
- 10
- +1
- 3K+
- Pin it
- Email



PLANTA PRIMERA / SECCIONS



24 SEP 2013
Houses Selected Works arnau
estudi d'arquitectura Sant Feliu de
Pallerols Spain

+
Bookmark

201

Like

53

Twee

10

8+1

3K+

Pint

Email

Section



© Marc Torra



© Marc Torra



© Marc Torra



© Marc Torra



© Marc Torra



© Marc Torra



© Marc Torra



© Marc Torra



© Marc Torra



© Marc Torra



© Marc Torra



© Marc Torra



© Marc Torra



© Marc Torra



© Marc Torra



24 SEP 2013

Houses Selected Works amau estudi d'arquitectura Sant Feliu de Pallerols Spain



201

Like

53

Tweet

10

+1

3K+

Pinterest

Email



© Marc Torra



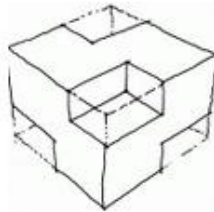
© Marc Torra



© Marc Torra



© Marc Torra



Sketch



Plan



Section